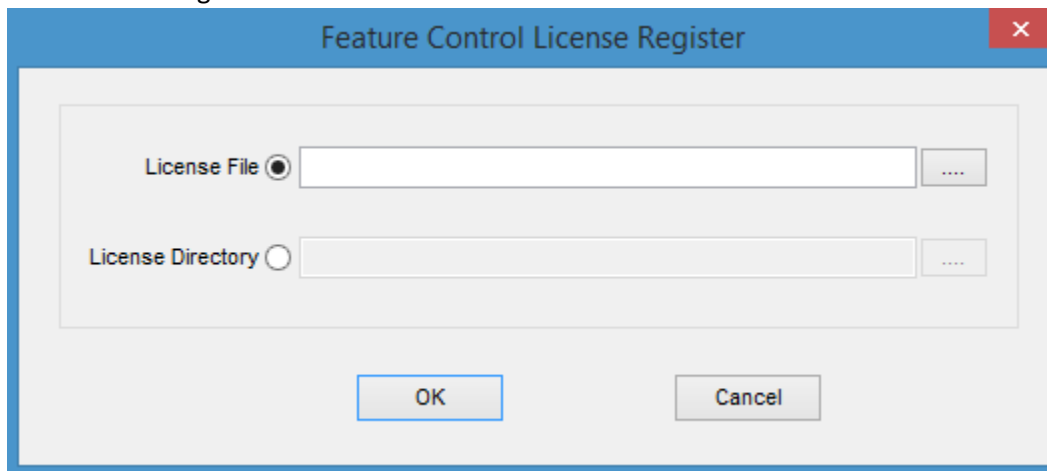
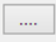


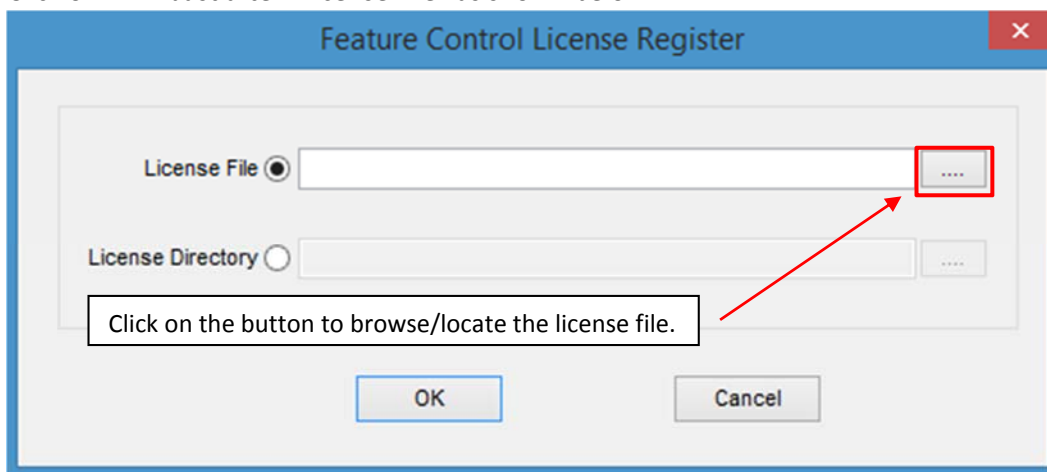
## HOW TO INSTALL A FEATURE LICENSE

This document will show you how to install a “Feature License” such as a Roaming, Encryption, IP License etc.

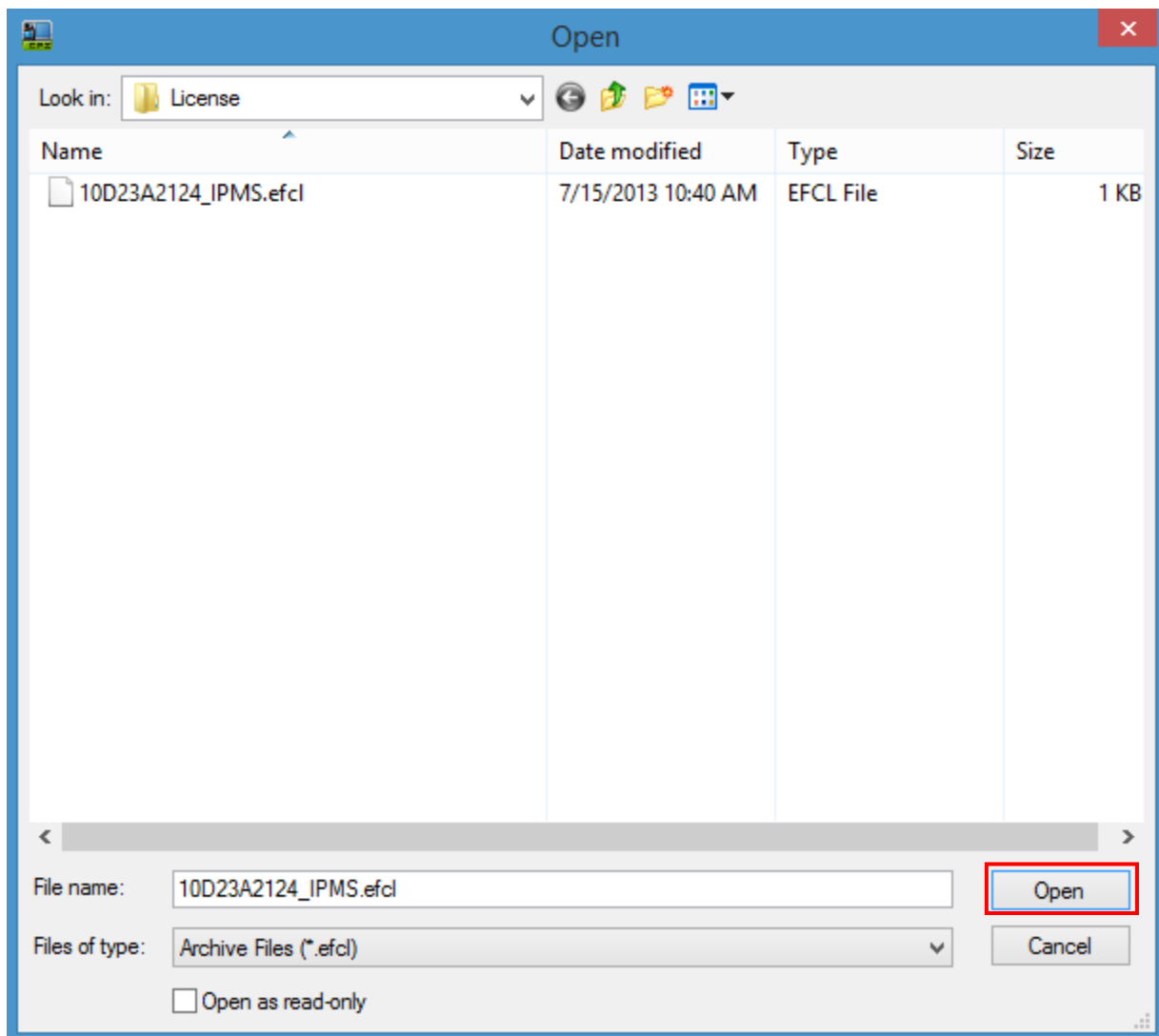
- 1) Read the radio with CPS.
- 2) Click on “Tools” then scroll down and click on “Feature Control License Register” and you will see the following screen:



- 3) Click on  Just after “License File” as shown below:

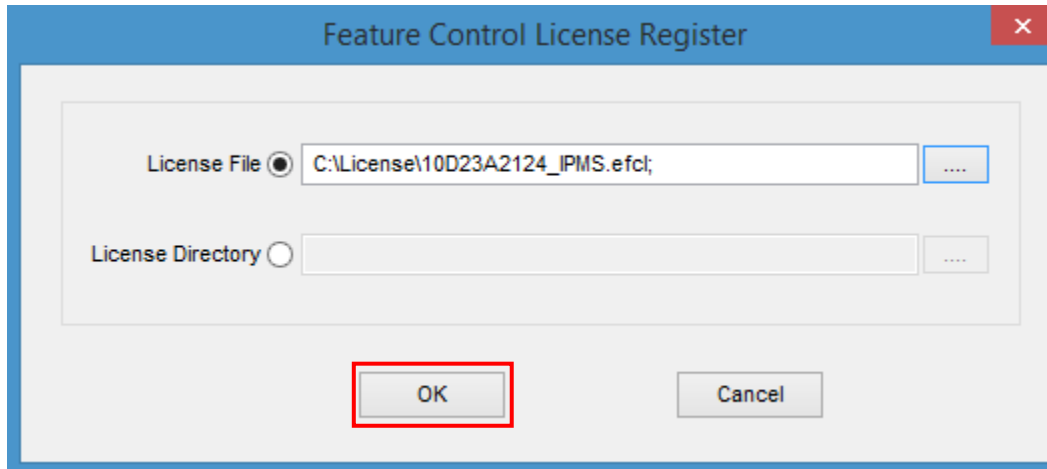


- 4) Now you can browse for your license file. Your license file will look something like this below. Click on your license file and then click "Open". The license file\* is unique to the specific serial numbered radio it was ordered for. *(SEE SPECIAL NOTE BELOW)*

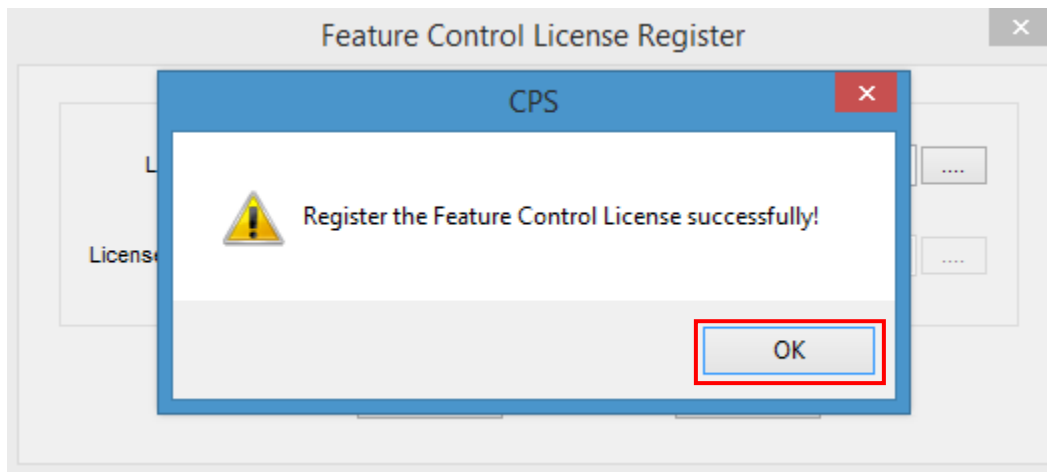


\* **SPECIAL NOTE:** For Firmware v7.06 and above CPS requires an **.FCX** license file. For Firmware v7.0 and lower, CPS requires an **.EFCL** file.

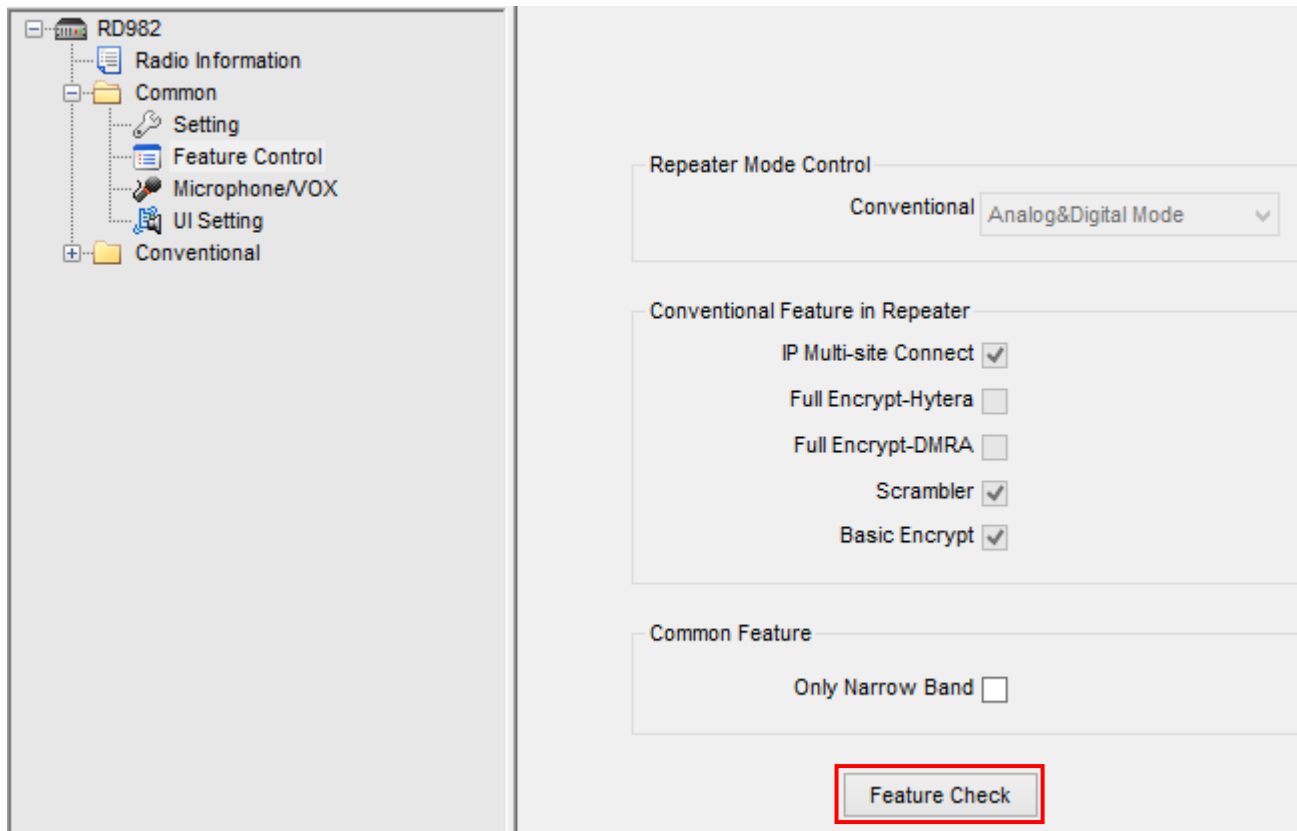
- 5) When you see your license file inserted, click on “OK” to proceed.



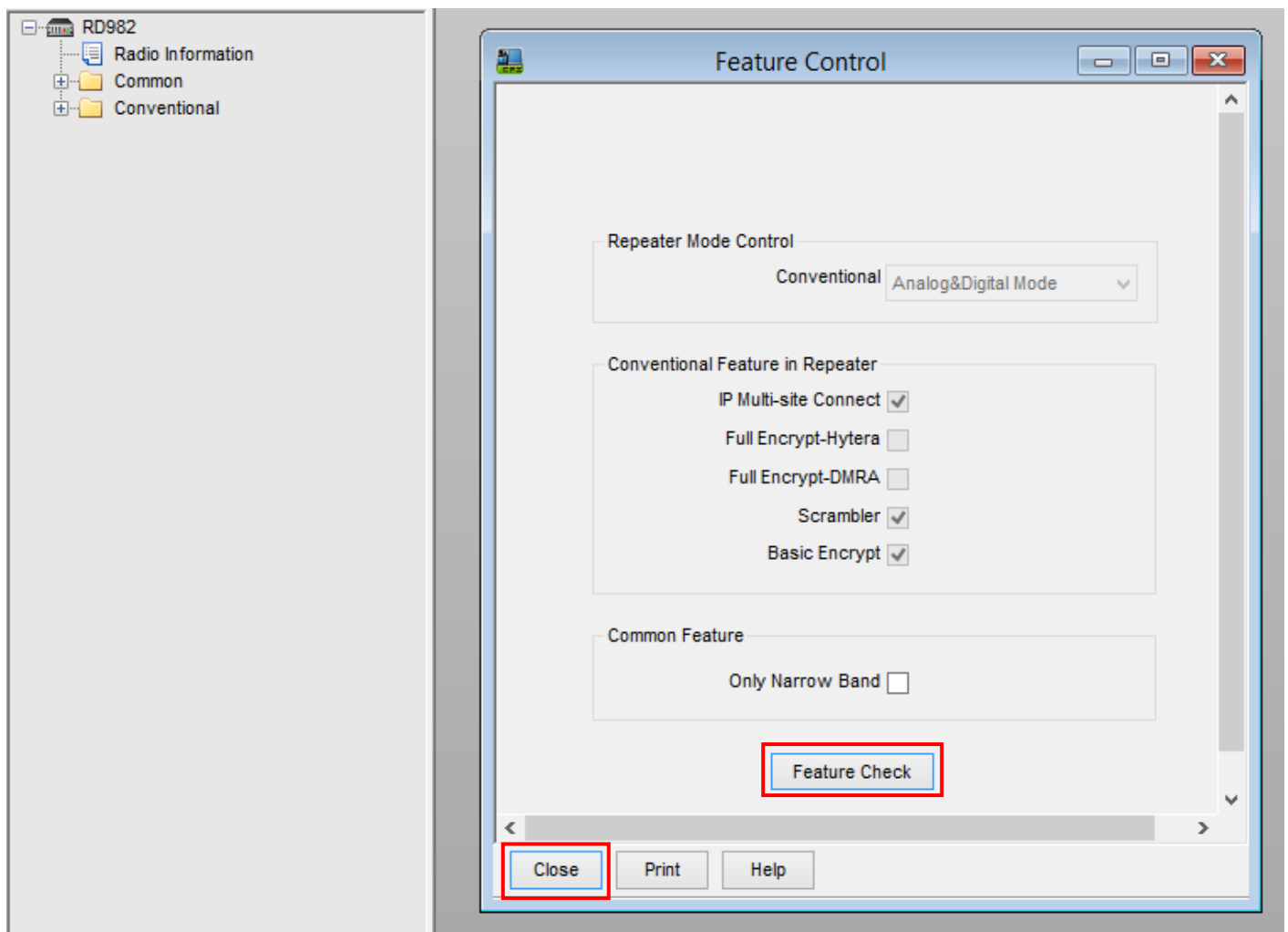
- 6) Once your license has been successfully registered, click “OK” to continue. There are still several steps remaining to complete this process.



- 7) Now you must go to feature control and perform a “Feature Check” to complete the final stages of the license installation. Feature Control is located under, “Common”. Click on the “Feature Check Button”.



- 8) When you click on “Feature Check” you will see the following screen below. Click on Feature Check one more time. You will not see anything different happen and proceed to click “Close”.



- 9) Now you must write the CPS to the radio in order to permanently save the license to the radio. While you should never need to refer to your license file again, it is always recommended that you store your license file in a safe place (Backup) in case you ever need to re-install it.
- 10) This concludes how to install a Feature License.