



Smart MDM Lite

Installation and Configuration Guide

R1.6_V3.0



Copyright Information

Hytera is the trademark or registered trademark of Hytera Communications Corporation Limited in PRC and/or other countries or areas. Hytera retains the ownership of its trademarks and product names. All other trademarks and/or product names that may be used in this manual are properties of their respective owners.

The product described in this manual may include Hytera's computer programs stored in memory or other media. Laws in PRC and/or other countries or areas protect the exclusive rights of Hytera with respect to its computer programs. The purchase of this product shall not be deemed to grant, either directly or by implication, any rights to the purchaser regarding Hytera's computer programs. Any of Hytera's computer programs may not be copied, modified, distributed, decompiled, or reverse-engineered in any manner without the prior written consent of Hytera.

Disclaimer

Hytera endeavors to achieve the accuracy and completeness of this manual, but no warranty of accuracy or reliability is given. All the specifications and designs are subject to change without notice due to continuous technology development. No part of this manual may be copied, modified, translated, or distributed in any manner without the express written permission of us.

We do not guarantee, for any particular purpose, the accuracy, validity, timeliness, legitimacy or completeness of the Third Party products and contents involved in this document.

If you have any suggestions or would like to learn more details, please visit our website at <http://www.hytera.com>.






Contents

Documentation Information	1
1. Overview.....	2
2. Before You Start	3
2.1 Hardware Preparation	3
2.2 Software Preparation	3
3. Installation.....	4

Documentation Information

Documentation Conventions

Icons

Icon	Description
 Tip	Implies the information that helps you make better use of your product.
 Note	Implies the reference that further describes the related topics.
 Caution	Implies the situation that could cause data loss or equipment damage.
 Warning	Implies the situation that could cause minor personal injury.
 Danger	Implies the situation that could cause major personal injury or even death.

Special Notational

Item	Description
->	Bolded words with -> between indicate navigation structure in the menu items.

Revision History

Version	Issue Date	Description
R1.6_V3.0	2018-03	Deleted the 32 bit installation package of SMART MDM Lite.
R1.5_V2.0	2017-12	Deleted installation password and wireless connection.
R1.0_V1.0	2017-08	Initial release

1. Overview

The Smart MDM (Mobile Device Management) Lite is a standalone mobile device management system that provides uniform control over multi-mode radio, including programming, upgrade, encryption key and app push. One radio can be connected to the system via programming cable.

2. Before You Start

2.1 Hardware Preparation

Item	Computer Specification
Operating System	<ul style="list-style-type: none">● Windows 7 Service Pack 1● Windows 8● Windows 10
CPU	Dual-core or above
Memory	3GB or above
Disk Space	10GB or above Note This space is only for installation. In consideration of the storage data from the service running, 40GB is recommended.
Display Resolution	1280 x 768 or above

2.2 Software Preparation

Please get the following files from Hytera customer service.

Files	Description
MDMLite_x64_setup.exe	The installation package of SMART MDM Lite

3. Installation

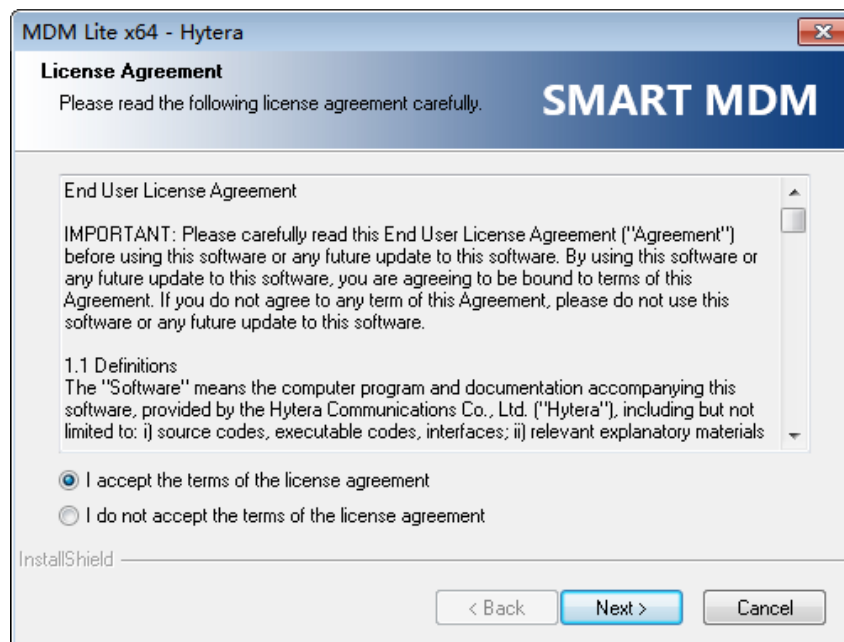
Caution

- The operating system Windows 7 must be version Service Pack 1.
- Do not install any Android cell phone management applications. Otherwise the radio cannot be connected to Smart MDM Lite.

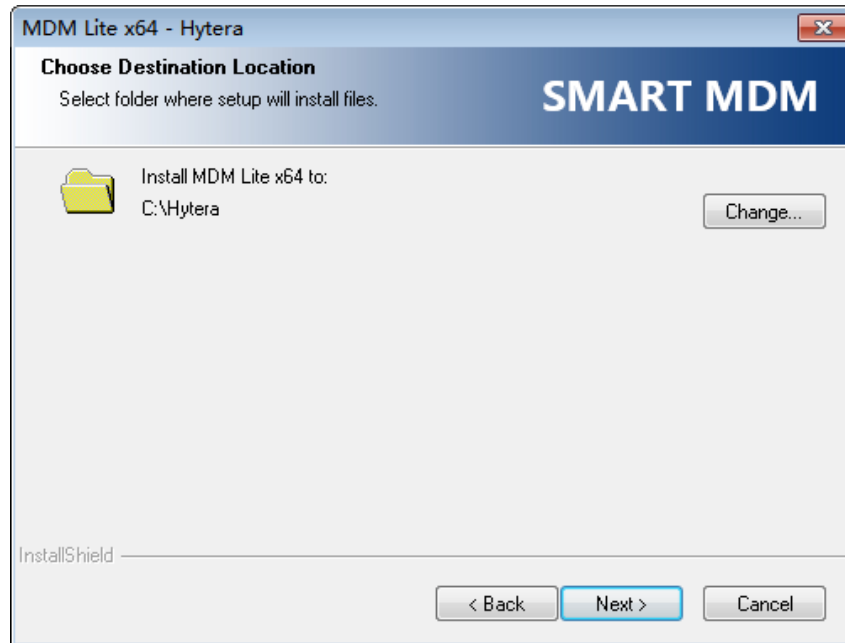
Step 1 Run MDMLite_x64_setup.exe as administrator.

Step 2 Choose the language and click **OK**.

Step 3 Check **I accept the terms of the license agreement** and click **Next**.



Step 4 Choose the installation directory and click **Next**.



Step 5 Click **Install**.

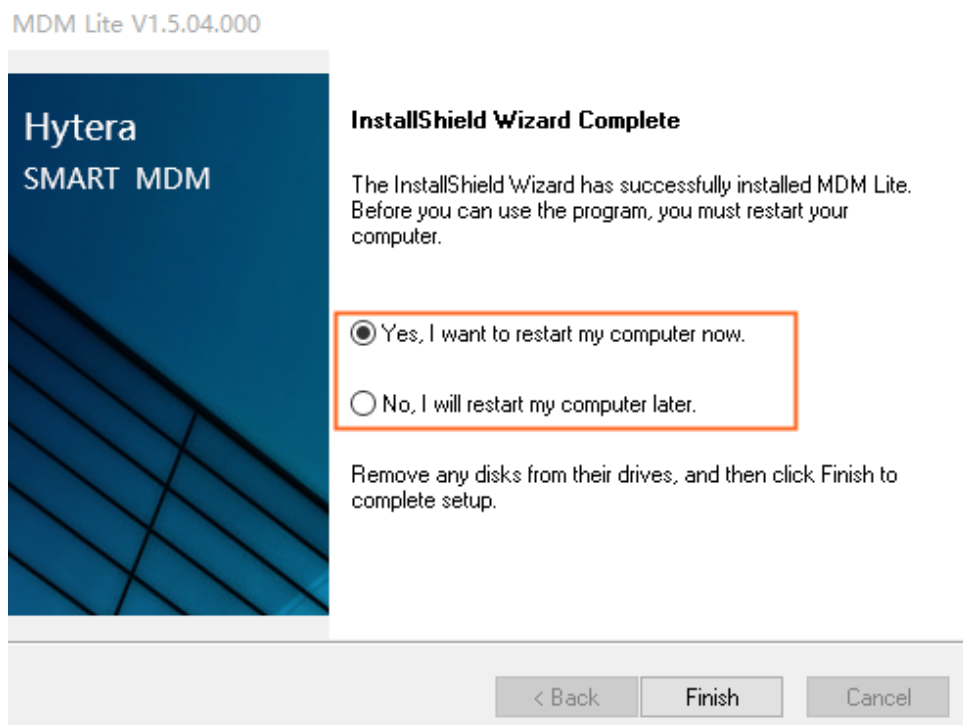


Note

Please choose **Install this driver software anyway...** when the installation is blocked by the firewall.

Step 6 (Optional) Restart the computer.

You may need to restart your computer to finish the installation.



Step 7 Click **Finish**.



is the trademark or registered trademark of Hytera Communications Corporation Limited.
© 2018 Hytera Communications Corporation Limited. All Rights Reserved.

Address: HYT Tower, Hi-Tech Industrial Park North, Beihuan
RD., Nanshan District, Shenzhen, China

Postcode:518057
<http://www.hytera.com>